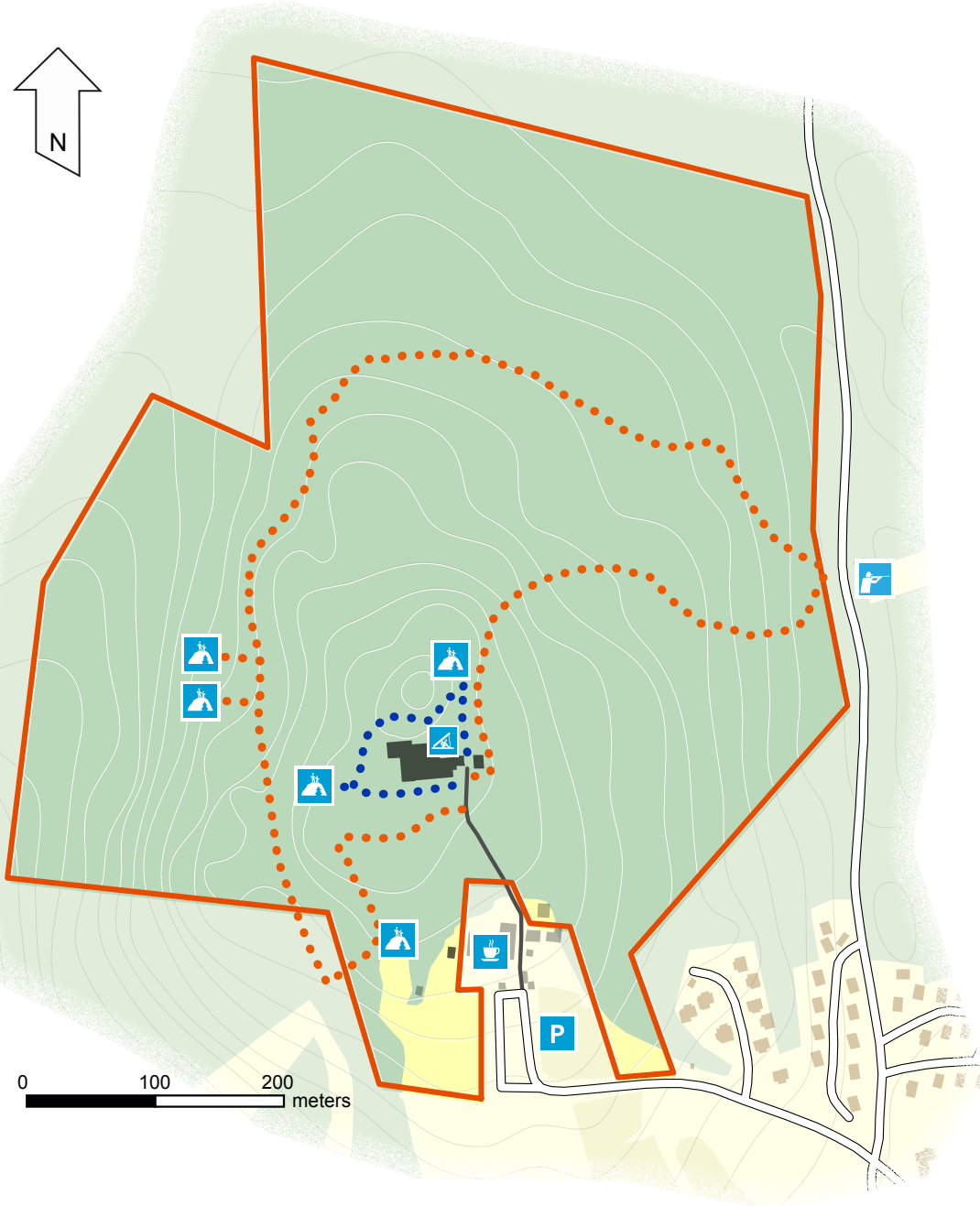
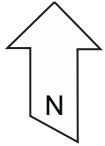




HIKING MAP

Siljansnäs nature reserve



••••• Bumblebee trail approximately 300 meters.

••••• The forest trail approximately 2 kilometers.
The first part of the trail is steep and slippery in rainy weather.

Shelter with fireplace

Viewpoint

Shooting range

Buffils Annas café

Parking

Border of the nature reserve

Woodland

Meadow



naturum[®]
Dalarna



HIKING MAP

Alviken tour and Storön nature reserve



At the boat mooring you must ensure that there is always a boat at each mooring. Row over and retrieve the boat which is on the other side by towing it back and leaving it at the same place you came from. Row over with the first boat, tie it up and continue your walk!



naturum
Dalarna